

WIND-DEVIL® 2 TECHNICAL DATA

WIND-LEVEL TEST DATA

WIND-DEVIL® 2

All measurements shown are ultimate pounds per foot.

EPS THICKNESS	PATTERN A	PATTERN B	PATTERN C
1"	107	88	85
1-1/2"	130	114	103
2"	144	129	124

Witness test reports available.

GENERAL CORROSION DATA

SALT SPRAY (ASTM-B117)

FINISH	HOURS TO INITIAL (%) SIGNS OF RED RUST	HOURS AND RED RUST (%) AT TEST CONCLUSION
Phosphate and oil	24 (5% or less)	240 (90 – 100%)
.0003" electro zinc	48 (5% or less)	240 (75 – 100%)
.001" hot dip galvanized	98 (5% or less)	320 (75 – 100%)
Wind-lock® CCS Coating	192 (5% or less)	720 (50 – 100%)

FASTENER PULLOUTS

WLMT SERIES

Dimensional lumber/wood sheathings.

Penetration dimensional lumber	1/2"	3/4"	1"	1-1/4"	1-1/2"
Pullout strength	183	304	441	652	731

WLMT SERIES

Lite Gauge Metal Siding

Nominal gauge	26	25	22	20
Lite metal pullout strength *	178	244	277	

*Consult Wind-lock® for pullout (through penetration 1/4" min.).

ST SERIES

Steel / Steel Studs

Nominal gauge	24	22	20	18	16	14	12
Steel pullout strength *	211	296	471	679	847	1225	

*Consult Wind-lock® for pullout (through penetration 1/4" min.).

MT SERIES

Masonry

Penetration	1"	1-1/4"	1-1/2"	1-3/4"
Concrete pullout strength	380	580	830	1090
Hollow block pullout strength	229	416†	452†	521†

†Denotes solid material.

MET SERIES

Masonry Expandable

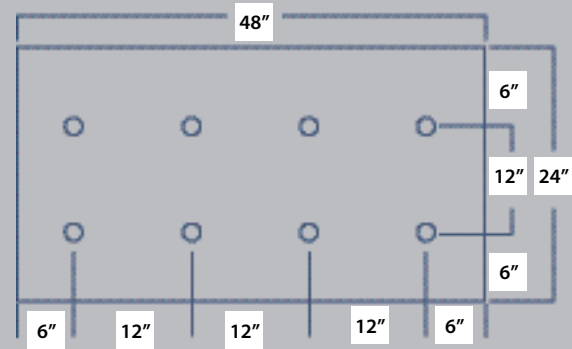
Concrete pullout strength	378
Hollow block pullout strength	333

Pullout strengths shown are ultimate values. An appropriate factor of safety must be applied by the user to obtain allowable limits for design.

Masonry must be pre-drilled 1/2" deeper than fastener penetration. Hardness of masonry varies and may require a nonstandard drill bit.

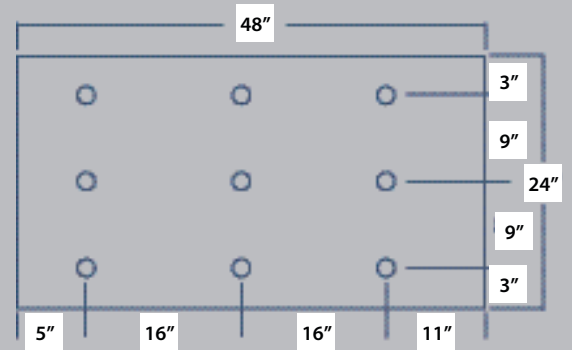
Please consult Wind-lock® for assistance in proper drill bit size. Consult system manufacturer for specific requirements.

TYPICAL WIND-DEVIL® 2 FASTENING PATTERNS



PATTERN A

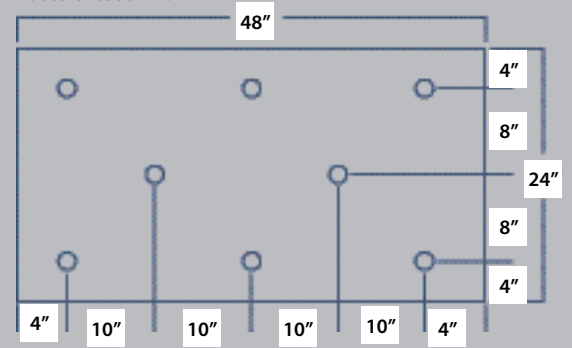
Wood sheathing, masonry and some metal sidings.



PATTERN B

16" O.C. stud fastening pattern.

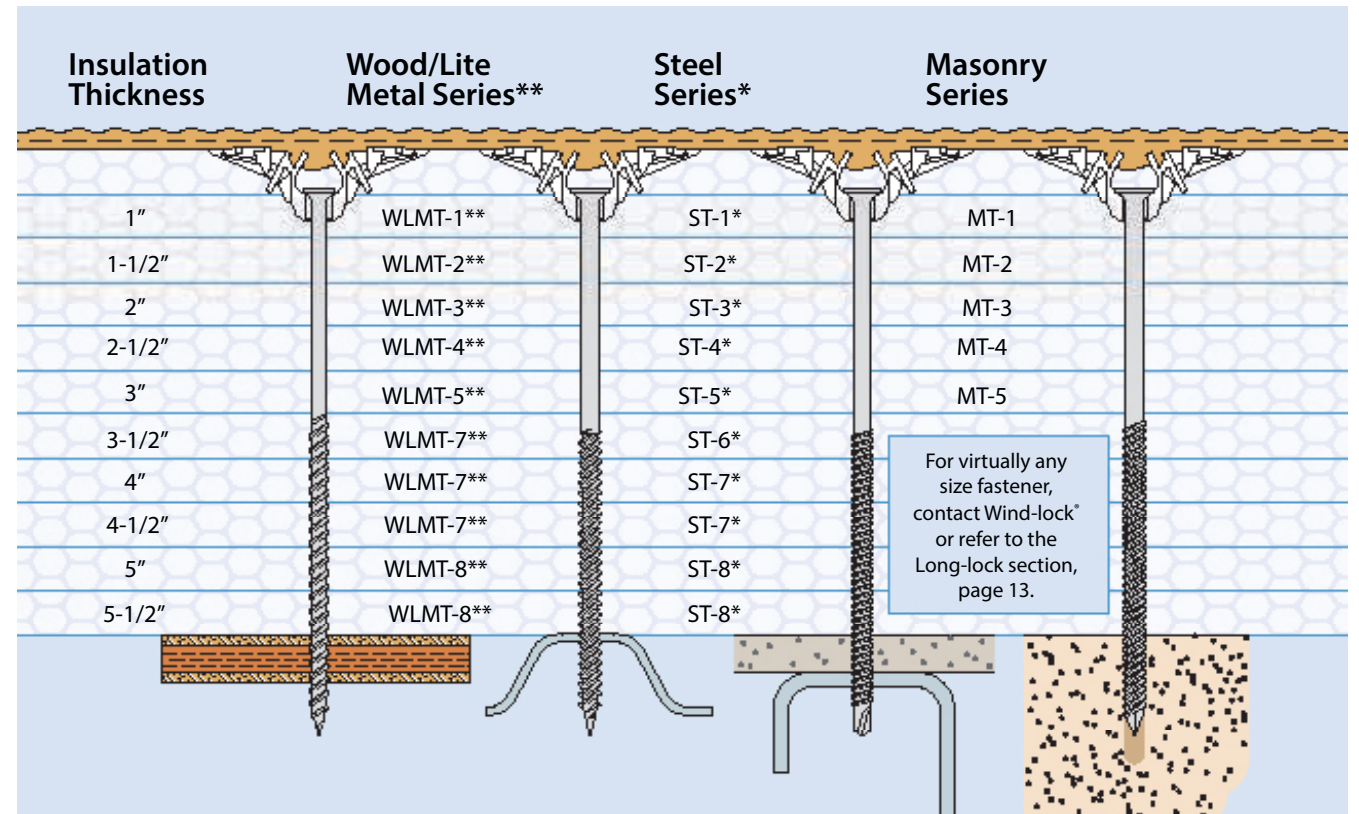
Note: For pattern "B" stud fastening over non-screwable sheathing, fastener spacing does not exceed 16" O.C. variable not to exceed 11".



PATTERN C

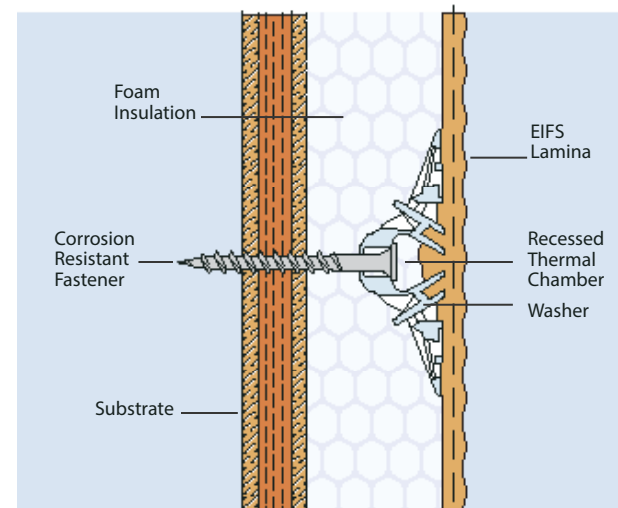
Wood sheathing, masonry and some metal sidings.

WIND-DEVIL® 2 SELECTION GUIDE



* Sizes are for direct application into steel and do not take into account the sheathing. For 1/2" and 5/8" sheathing, move fastener selection to next higher size.

**See page 8 for additional wood (GWT) and lite metal (GWLMT) fasteners.



WHY WIND-DEVIL® 2 IS THE BEST!

- Comprehensive witness testing
- Over 20 years of proven performance
- EIFS industry approved
- Significant negative wind-load resistance
- Recessed thermal chamber helps prevent thermal bridging
- Patented closure arms allow for easy "backing out"
- Installation of the Wind-Devil® 2 compresses the foam under the washer, forming a "gasket" around the fastener. This gasketing action diverts moisture from the fastener.