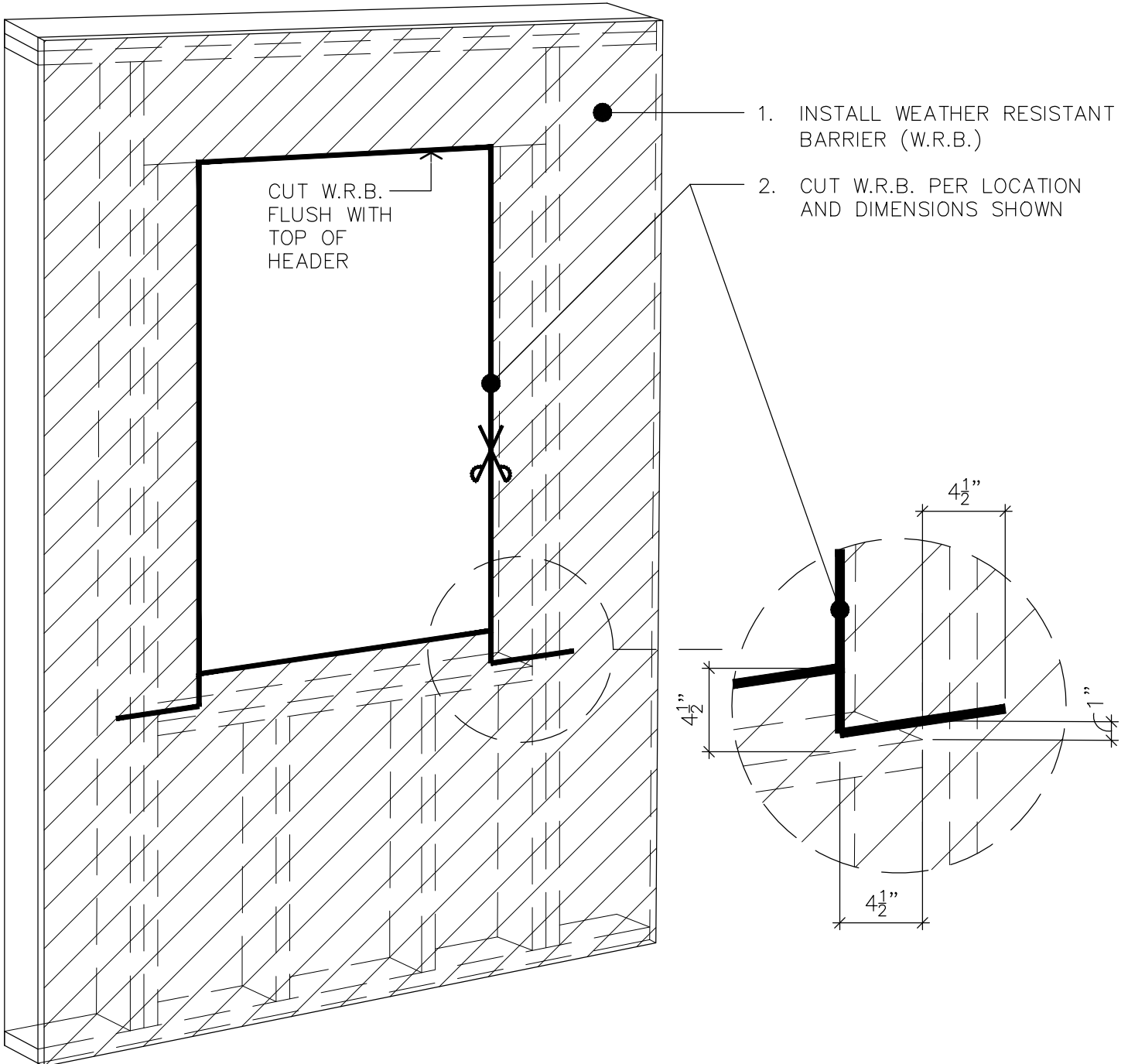


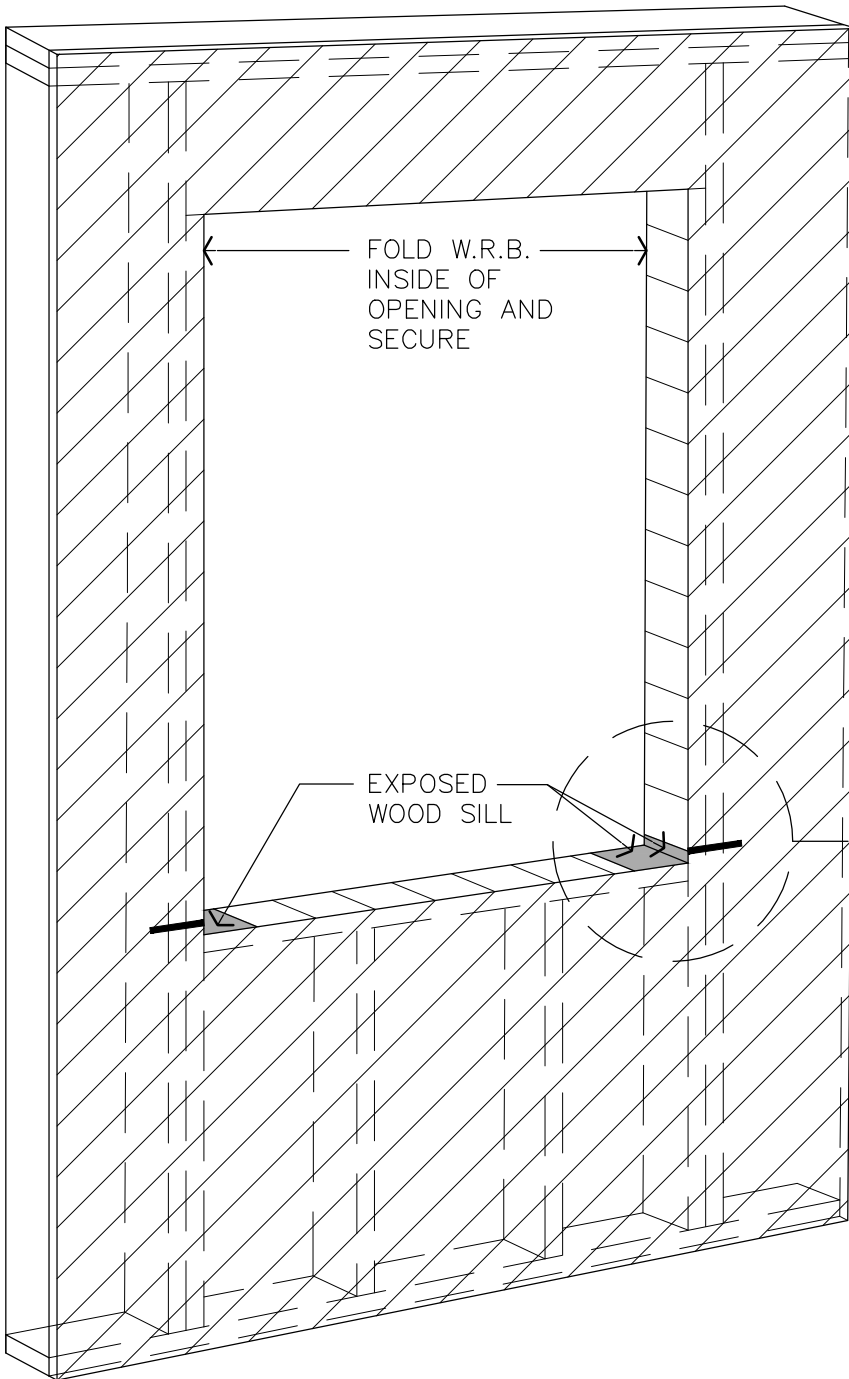


# INSTALLATION INSTRUCTIONS - STEP 1

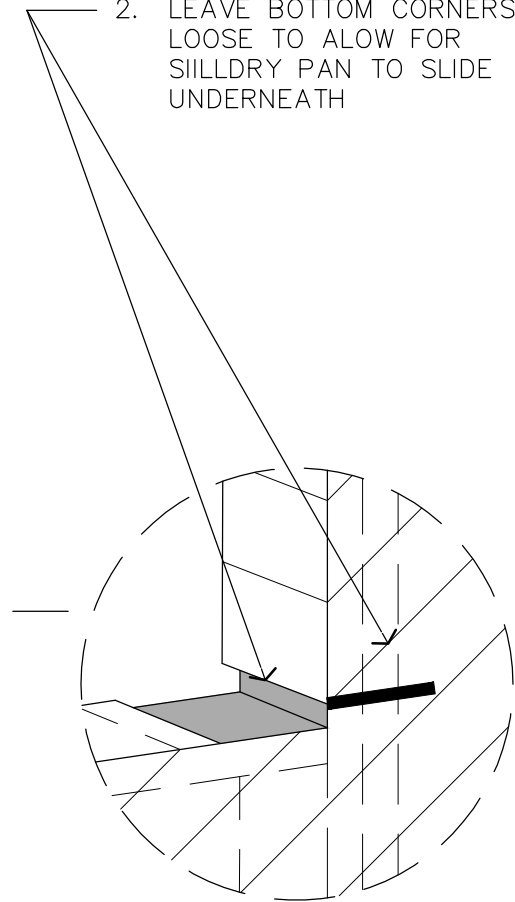




# INSTALLATION INSTRUCTIONS - STEP 2



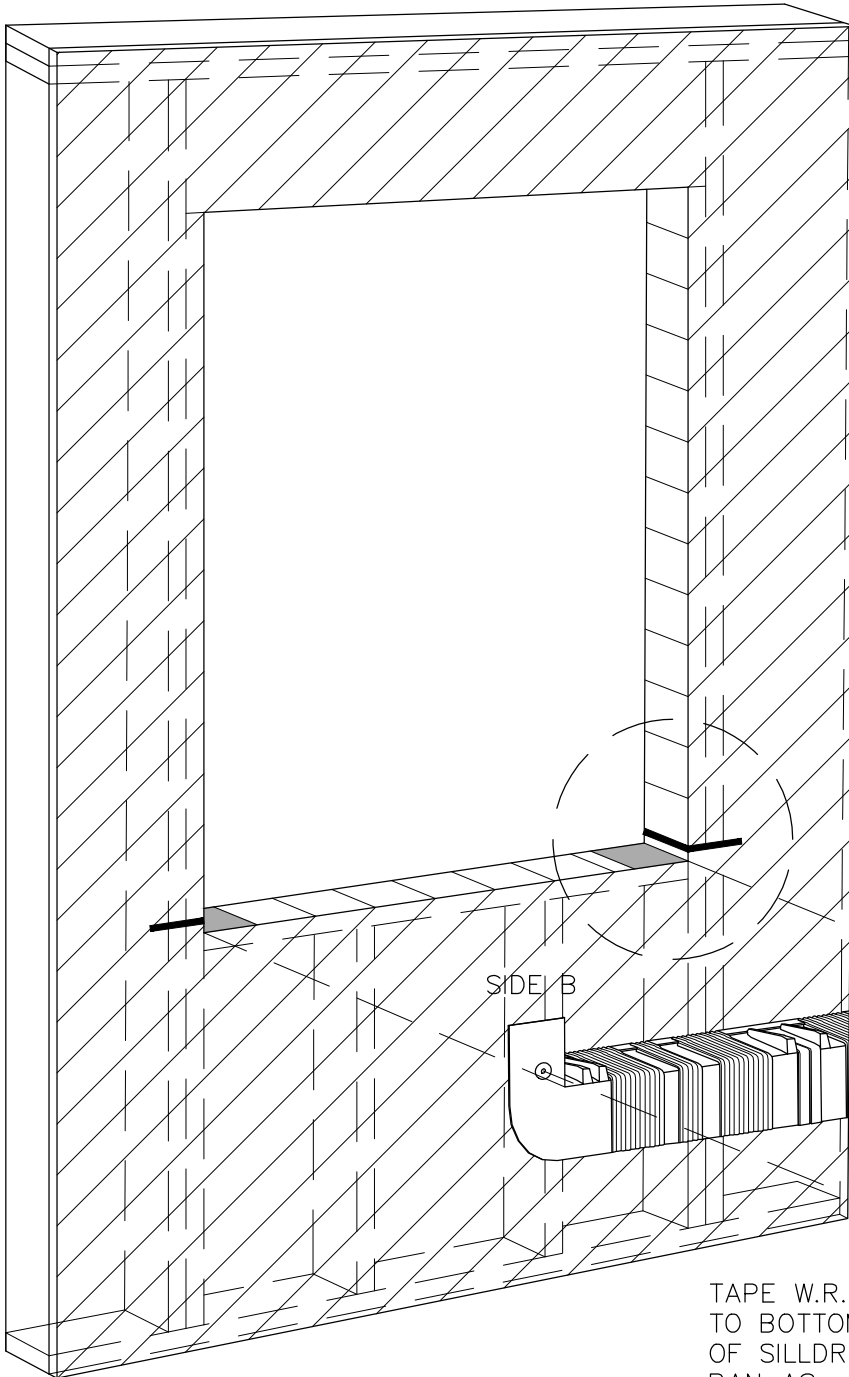
1. FOLD W.R.B. INSIDE AT SIDES AND SILL AND SECURE
2. LEAVE BOTTOM CORNERS LOOSE TO ALLOW FOR SILLDRY PAN TO SLIDE UNDERNEATH



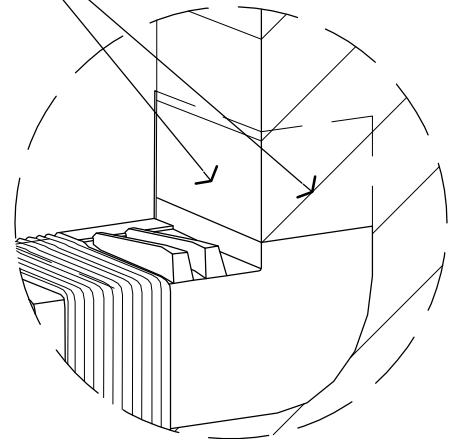


SILLDRY®

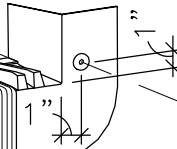
# INSTALLATION INSTRUCTIONS - STEP 3



1. SLIDE SILLDRY PAN UNDER BOTH SIDES OF W.R.B. AT EACH SILL CORNER
2. SECURE SIDE A FIRST THEN STRETCH SIDE B AND SECURE

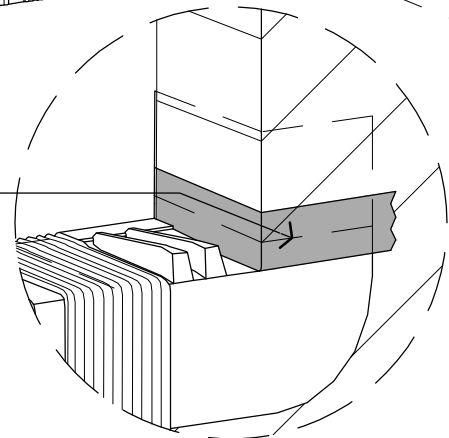


SIDE A



SIDE B

TAPE W.R.B. TO BOTTOM OF SILLDRY PAN AS SHOWN ON BOTH SIDES





SILLDRY®

# INSTALLATION INSTRUCTIONS - STEP 4

